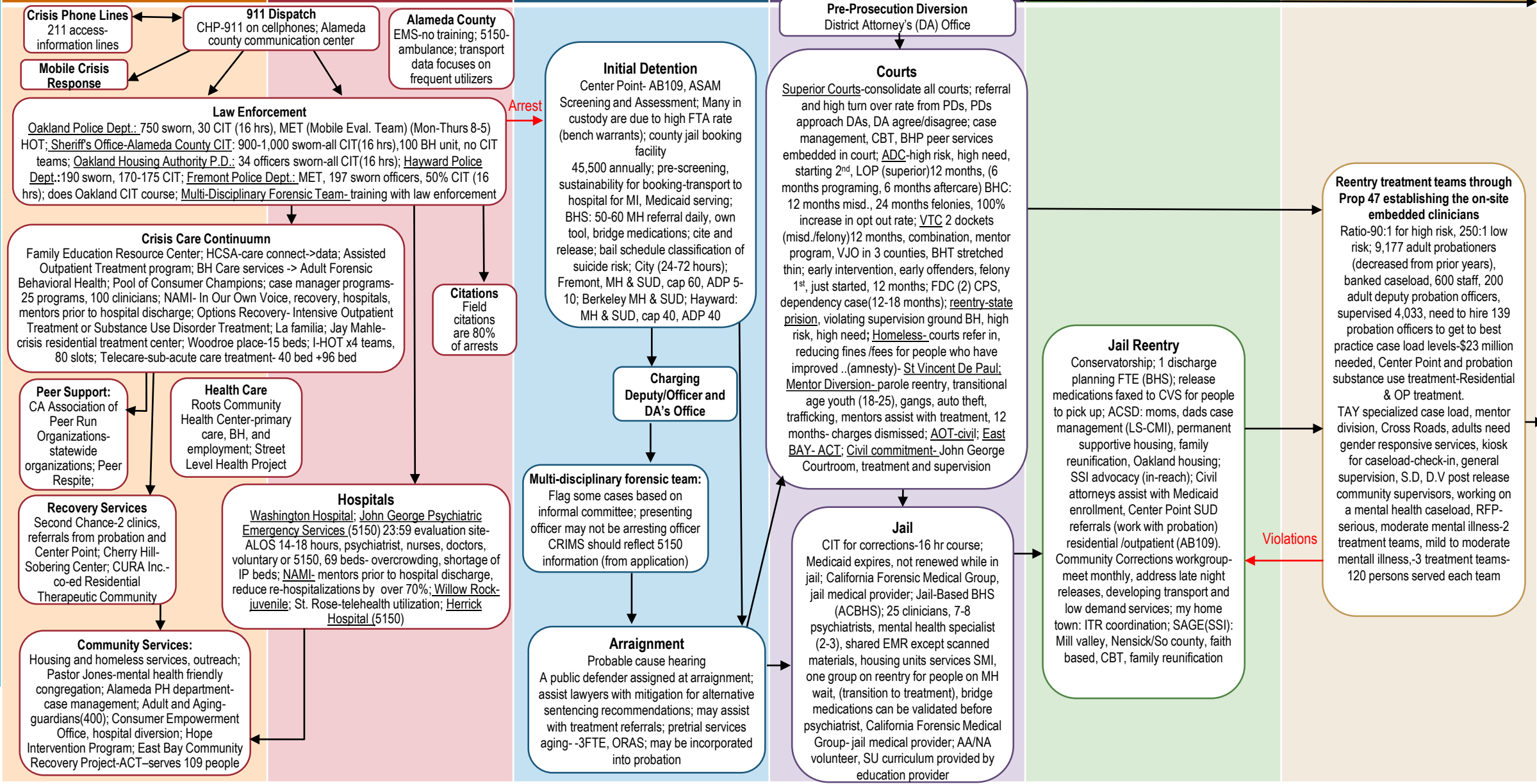


Intercept 0 Hospital, Crisis, Respite, Peer, & Community Services	Intercept 1 Law Enforcement & Emergency Services	Intercept 2 Initial Detention & Initial Court Hearings	Intercept 3 Jails & Courts	Intercept 4 Reentry	Intercept 5 Community Corrections & Community Supports
---	--	--	--------------------------------------	-------------------------------	--

COMMUNITY

COMMUNITY





JIMH Taskforce SIM Intercept Updates

Intercepts	Current Resources	Future Resources
Intercept 0 Hospitals, Crisis, Respite, Peer & Community Services	<ul style="list-style-type: none"> • Peer Respite (6-12 months) • FSP Expansion • Forensic ACT programs • Amber House CSU/CRT (6-12 months) • Alameda Social Services Agency • BHCS Mobile Crisis Team / Mobile Evaluation Team 	<ul style="list-style-type: none"> • BHCS Community Connections Team (Spring 2019) • National Alliance of Mental Illness on Campus (high school & college)
Intercept 1 Law Enforcement & Emergency Services	<ul style="list-style-type: none"> • Assisted Outpatient Treatment (AOT) • Community / LSP Conservatorship • CIT • Homeless Liaison / Policing Team (HLP TEM) – 2 officer unit partnering with resource providers to focus on homelessness issues, including mental health 	<ul style="list-style-type: none"> • BHCS (July 2019) - Community Assessment Transport Team (CATT)
Intercept 2 Initial Detention & Initial Court Hearing	<ul style="list-style-type: none"> • PES Prefiling Diversion • Behavioral Health Court • Drug Court • Veterans Court 	<ul style="list-style-type: none"> • Mental Health Diversion Court (IST & Non IST) • Pretrial Release w/ Health conditions of release • NAMI Peer to Peer Program – how to manage one’s illness
Intercept 3 Jails & Courts	<ul style="list-style-type: none"> • Drug court 1 & 2 • Reentry Court • Veterans Court • Family Drug Court 1-3 • Homeless Court • CJ Mental Health • North County / East County Drug court • Behavioral / Mental Health Court • Informal Behavioral Health Court • Early Intervention Court • Mentor Diversion Court 	<ul style="list-style-type: none"> • Hiring mental health assessor for treatment courts to evaluate / screen all participants as relates to trauma and mental health



JIMH Taskforce SIM Intercept Updates

	<ul style="list-style-type: none"> • Department of State Hospitals • Telecare joins BHC • BACS serves all BHC • Pretrial Services • CAP / BHC • Transition Center in jails 	
<p>Intercept 4 Reentry</p>	<ul style="list-style-type: none"> • Department of State Hospitals • CAP / BHC • BACS Reentry free program provides pre-release and post release transitional case management to connect to long-term crisis management programs and connection to benefits and services • Reentry Court • Residential SUD • Outpatient SUD • Murphy Conservatorship 	<ul style="list-style-type: none"> • NAMI Family to Family program – 12 sessions course for caregivers of someone with a mental illness • NAMI Connection – support group for and by people with a mental illness • BHCS -post crisis follow-up (Winter – Spring 2019)
<p>Intercept 5 Community Corrections & Supports</p>	<ul style="list-style-type: none"> • CONREP • Prop 47 Reentry Treatment teams providing 160 slots of treatment and case management • Prop 47 housing providers funds for ~50 SMI/SUD clients up to \$500 each • Prop 47 increase SUD recovery residential capacity by 11 beds and assessment and referral • AB109 funded SUD services for probationers only • Probation CM • 2 onsite BHCS clinicians to Probation offices for assessment and referral to BHCS program and mid to moderate 	<ul style="list-style-type: none"> • AB109 funding 2 SMI teams serving 80 and 3 mild to moderate serving 240 AB109 clients only